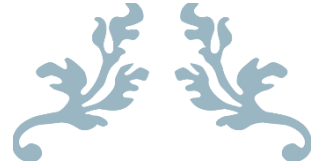


*SANDWELLS*



---

# BUTTERFLIES AND MOTHS OF THE SANDWELL VALLEY

---

A checklist with notes  
Edited by M.G.Bloxham



APRIL 2026

## Butterflies and Moths of the Sandwell Valley

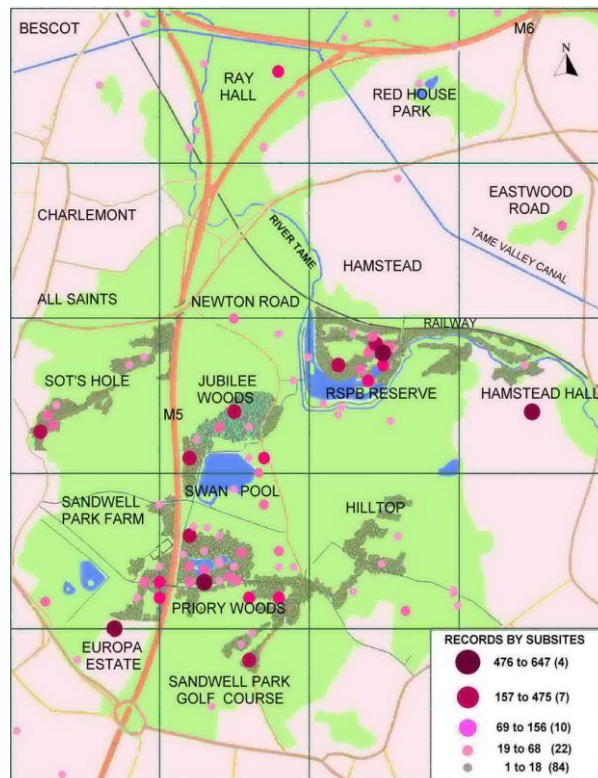
Formal recording started in 1976. We are grateful to the Metropolitan Borough Council of Sandwell and its associated Rangers for permitting the survey to proceed and thank local Wardens and other staff for regular assistance. Thanks also go to the Wildlife Trust for Birmingham and the Black Country for permitting us to use records accumulated during phases one and two of their wildlife surveys.

An existing publication 'Butterflies and Moths of the Sandwell Valley' published in 2014 (ISBN978-0-9511532-4-6) is available for all who need a comprehensive account of studies carried out in the area and a checklist of all the species encountered at that time. A great deal of information on the local fauna has accumulated since then and a revised checklist will enable readers at least to see species more recently recorded and note the appearance of a number of species extending their ranges.

The earliest work was undertaken by Bob and Alicia Normand, but they were soon followed in this enterprise by Dave Grundy (Garden Moth Scheme), with Tony Wood and Andy Purcell engaging several other members in trapping activity. Recently a group under the leadership of Richard Orton (operating from the RSPB Centre) has greatly expanded the light-trapping programme and been instrumental in encouraging the publication of this updated checklist. The names of members and friends associated with recording and photography are given here, together with a map of the Sandwell Valley survey area. We apologise for errors and omissions that may be discovered in this publication.

County Recorders and those with special expertise in groups are marked by bold lettering.

Bloxham, Mr M.G., Blyth, Mr D., Boardman, Mr P., Bodnar, Mr S. Bryan, Mr M.D., Busbridge, Ms R.M., **Clement, Mr P.**, Cole, Mrs A., **Emley, Dr D. W.**, Essex, Mr P., Evans, Mr L.J., Fortey, Mr J.E., **Grundy, Mr D.**, Hackett, Mr P., Hadlington, Mr M., Hall, Mr N., Haslam, Mr D., Hextell, Mr T.C., Horne, Mr C., **Hull, Dr M.**, Jeffrey Mr A., Jones, Ms R.A., Little, Mr J., Maiden, Mr J., Normand, Mr R, Normand, Mrs A., **Orton, Dr R.**, Parry, Mr C.R., Poulton, Mr M. Purcell, Mr A.J. Rajabali, Mr A., Robbins, **Dr J.**, **Homan**, Mr R., Shirley, Mr P.R., Shrimpton, Mr J., **Simpson, Dr A.N.B.**, Slawson, Mr G.C., Smith, Mr P., Stephenson, Mr P., Stevenson-Haugh, Ms J., Taylor, Ms C., Tudor, Mr O., Vallance, Mr D., **Warren, Mr R.** West, Mr M., West, Mrs A., Whitehead, Mr A., Wilding, Ms J., Willets, Mrs R. Winnall, Mrs R., Wollner, Ms J., Wood, Mr A., Wooldridge, Ms M.S.



Butterflies and Moths of the Sandwell Valley

Code	Family & species names	Vernacular
<b>Micropterigidae</b>		
1.003	<i>Micropterix aureatella</i>	a moth
1.004	<i>Micropterix aruncella</i>	a moth
<b>Eriocraniidae</b>		
2.001	<i>Dyseriocrania subpurpurella</i>	a moth
2.004	<i>Eriocrania sparrmannella</i>	a moth
2.005	<i>Eriocrania salopiella</i>	a moth
2.006	<i>Eriocrania cicatricella</i>	a moth
2.008	<i>Eriocrania sangii</i>	a moth
<b>Hepialidae</b>		
3.001	<i>Triodia sylvina</i>	Orange Swift
3.002	<i>Korscheltellus lupulina</i>	Common Swift
3.005	<i>Hepialus humuli</i>	Ghost Moth
<b>Nepticulidae</b>		
4.002	<i>Stigmella lapponica</i>	a moth
4.003	<i>Stigmella confusella</i>	a moth
4.007	<i>Stigmella luteella</i>	a moth
4.01	<i>Stigmella microtheriella</i>	a moth
4.023	<i>Stigmella crataegella</i>	a moth
4.025	<i>Stigmella nylandriella</i>	a moth
4.026	<i>Stigmella oxyacanthella</i>	a moth
4.03	<i>Stigmella hybnerella</i>	a moth
4.032	<i>Stigmella floslactella</i>	a moth
4.034	<i>Stigmella tityrella</i>	a moth
4.035	<i>Stigmella salicis</i>	a moth
4.042	<i>Stigmella plagicolella</i>	a moth
4.043	<i>Stigmella lemniscella</i>	a moth
4.045	<i>Stigmella aurella</i>	a moth
4.047	<i>Stigmella splendidissimella</i>	a moth
4.055	<i>Stigmella hemargyrella</i>	a moth
4.056	<i>Stigmella speciosa</i>	a moth
4.06	<i>Stigmella ruficapitella</i>	a moth
4.061	<i>Stigmella atricapitella</i>	a moth
4.062	<i>Stigmella samiatella</i>	a moth
4.068	<i>Trifurcula immundella</i>	a moth
4.089	<i>Ectoedemia albifasciella</i>	a moth
4.09	<i>Ectoedemia subbimaculella</i>	a moth
4.095	<i>Ectoedemia atricollis</i>	a moth
4.099	<i>Ectoedemia occultella</i>	a moth
6.001	<i>Antispila metallella</i>	a moth
<b>Heliozelidae</b>		
6.003	<i>Heliozela sericiella</i>	a moth
6.004	<i>Heliozela resplendella</i>	a moth
<b>Adelidae</b>		
7.001	<i>Nemophora degeerella</i>	a moth



*Adela reaumurella*

Butterflies and Moths of the Sandwell Valley

- 7.006 *Adela reaumurella* a moth
- 7.01 *Cauchas rufimitrella* a moth
- 7.015 *Nematopogon swammerdamella* a moth

**Incurvariidae**

- 8.002 *Incurvaria maschilella* a moth

**Tischeriidae**

- 10.001 *Tischeria ekebladella* a moth
- 10.003 *Coptotriche marginea* a moth

**Tineidae**

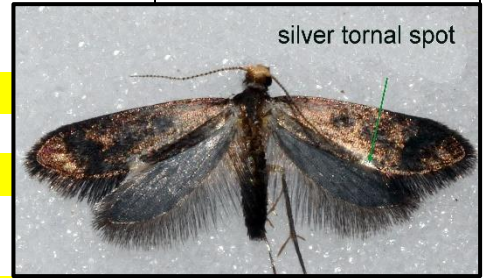
- 12.012 *Triaxomera parasitella* a moth
- 12.016 *Nemapogon cloacella* Cork Moth
- 12.03 *Tinea pallescentella* Large Pale Clothes Moth
- 12.032 *Tinea semifulvella* a moth
- 12.033 *Tinea trinotella* a moth
- 12.036 *Monopis laevigella* Skin Moth
- 12.048 *Psychoides filicivora* a moth

**Bucculatricidae**

- 14.001 ***Bucculatrix cristatella*** a moth
- 14.002 *Bucculatrix nigricomella* a moth
- 14.01 *Bucculatrix ulmella* a moth

**Gracillariidae**

- 15.003 *Caloptilia populetorum* a moth
- 15.004 *Caloptilia elongella* a moth
- 15.005 *Caloptilia betulicola* a moth
- 15.006 *Caloptilia rufipennella* a moth
- 15.008 *Caloptilia alchimiella* a moth
- 15.01 *Caloptilia stigmatella* a moth
- 15.014 *Gracillaria syringella* a moth
- 15.015 *Aspilapteryx tringipennella* a moth
- 15.016 *Euspilapteryx auroguttella* a moth
- 15.017 *Calybites phasianipennella* a moth
- 15.025 *Parornix betulae* a moth
- 15.028 *Parornix anglicella* a moth
- 15.029 *Parornix devoniella* a moth
- 15.034 *Phyllonorycter harrisella* a moth
- 15.036 *Phyllonorycter heegeriella* a moth
- 15.039 *Phyllonorycter quercifoliella* a moth
- 15.04 *Phyllonorycter messaniella* a moth
- 15.041 *Phyllonorycter platani* a moth
- 15.043 *Phyllonorycter oxyacanthae* a moth
- 15.044 *Phyllonorycter sorbi* a moth
- 15.05 *Phyllonorycter cerasicolella* a moth
- 15.051 *Phyllonorycter lantanella* a moth
- 15.052 *Phyllonorycter corylifoliella* a moth
- 15.053 *Phyllonorycter leucographella* Firethorn Leaf Miner
- 15.063 *Phyllonorycter maestingella* a moth
- 15.064 *Phyllonorycter coryli* Nut Leaf Blister Moth



silver tormal spot

*Psychoides filicivora*



*Tinea trinotella*



*Phyllonorycter platani*

## Butterflies and Moths of the Sandwell Valley

15.065	<i>Phyllonorycter esperella</i>	a moth
15.067	<i>Phyllonorycter rajella</i>	a moth
15.075	<i>Phyllonorycter ulmifoliella</i>	a moth
15.076	<i>Phyllonorycter emberizaepenella</i>	a moth
15.078	<i>Phyllonorycter tristrigella</i>	a moth
15.079	<i>Phyllonorycter stettinensis</i>	a moth
15.08	<i>Phyllonorycter froelichiella</i>	a moth
15.081	<i>Phyllonorycter nicellii</i>	a moth
15.082	<i>Phyllonorycter klemannella</i>	a moth
15.084	<i>Phyllonorycter acerifoliella</i>	a moth
15.086	<i>Phyllonorycter geniculella</i>	a moth
15.089	<i>Cameraria ohridella</i>	a moth
15.09	<i>Phyllocnistis saligna</i>	a moth



*Ypsolopha parenthesesella*

### Yponomeutidae

16.001	<i>Yponomeuta evonymella</i>	Bird-cherry Ermine
16.002	<i>Yponomeuta padella</i>	Orchard Ermine
16.004	<i>Yponomeuta cagnagella</i>	Spindle Ermine
16.005	<i>Yponomeuta rorrella</i>	Willow Ermine
16.015	<i>Swammerdamia caesiella</i>	a moth
16.017	<i>Swammerdamia pyrella</i>	a moth
16.02	<i>Paraswammerdamia lutarea</i>	a moth
16.02	<i>Paraswammerdamia nebulella</i>	a moth
16.022	<i>Cedestis subfasciella</i>	a moth
17.003	<i>Ypsolopha dentella</i>	Honeysuckle Moth
17.005	<i>Ypsolopha scabrella</i>	a moth
17.008	<i>Ypsolopha alpella</i>	a moth
17.009	<i>Ypsolopha sylvella</i>	a moth
17.01	<i>Ypsolopha parenthesesella</i>	a moth
17.011	<i>Ypsolopha ustella</i>	a moth
17.012	<i>Ypsolopha sequella</i>	a moth
17.014	<b><i>Ochsenheimeria taurella</i></b>	<b>a moth</b>



*Ypsolopha sequella*

### Plutellidae

18.001	<i>Plutella xylostella</i>	Diamond-back Moth
18.003	<i>Plutella porrectella</i>	a moth

### Glyphipterigidae

19.002	<i>Glyphipterix thrasonella</i>	a moth
19.007	<i>Glyphipterix simpliciella</i>	Cocksfoot Moth
19.011	<i>Acrolepiopsis assectella</i>	Leek Moth
19.014	<i>Acrolepia autumnitella</i>	a moth

### Argyresthiidae

20.005	<i>Argyresthia trifasciata</i>	a moth
20.011	<i>Argyresthia brockeella</i>	a moth
20.012	<i>Argyresthia goedartella</i>	a moth
20.013	<i>Argyresthia pygmaeella</i>	a moth
20.016	<i>Argyresthia retinella</i>	a moth
20.02	<i>Argyresthia semifusca</i>	a moth
20.021	<i>Argyresthia pruniella</i>	Cherry Fruit Moth



*Glyphipterix thrasonella*

## Butterflies and Moths of the Sandwell Valley

20.022	<i>Argyresthia bonnetella</i>	a moth	
<b>Lyonetiidae</b>			
21.001	<i>Lyonetia clerkella</i>	Apple Leaf Miner	
21.004	<i>Leucoptera laburnella</i>	Laburnum Leaf Miner	
<b>Praydidae</b>			
22.002	<i>Prays fraxinella</i>	Ash Bud Moth	
<b>Scythropiidae</b>			
25.001	<i>Scythropia crataegella</i>	Hawthorn Moth	
<b>Autostichidae</b>			
27.001	<i>Oegoconia quadripuncta</i>	a moth	
<b>Oecophoridae</b>			
28.009	<i>Endrosis sarcitrella</i>	White-shouldered House-moth	
28.01	<i>Hofmannophila pseudospretella</i>	Brown House-moth	
28.012	<i>Borkhausenia fuscescens</i>	a moth	
28.014	<i>Crassa unitella</i>	a moth	
28.015	<i>Batia lunaris</i>	a moth	
28.019	<i>Esperia sulphurella</i>	a moth	
28.024	<i>Tachystola acroxantha</i>	a moth	
28.027	<b><i>Aplota palpellus</i></b>	<b>a moth</b>	
<b>Chimabachidae</b>			
29.001	<i>Diurnea fagella</i>	a moth	
<b>Lypusidae</b>			
30.003	<b><i>Pseudatemelia flavifrontella</i></b>	<b>a moth</b>	
<b>Peleopodidae</b>			
31.001	<i>Carcina quercana</i>	a moth	
<b>Depressariidae</b>			
32.007	<i>Agonopterix ocellana</i>	a moth	
32.008	<i>Agonopterix liturosa</i>	a moth	
32.016	<i>Agonopterix propinquella</i>	a moth	
32.017	<i>Agonopterix arenella</i>	a moth	
32.018	<i>Agonopterix heracliiana</i>	a moth	
32.03	<i>Agonopterix nervosa</i>	a moth	
32.031	<i>Agonopterix alstromeriana</i>	a moth	
32.036	<i>Depressaria radiella</i>	Parsnip Moth	
32.038	<i>Depressaria badiella</i>	a moth	
<b>Cosmopterigidae</b>			
34.004	<i>Limnaecia phragmitella</i>	a moth	
<b>Gelechiidae</b>			
35.003	<i>Syncopacma larseniella</i>	a moth	
35.011	<i>Anacamptis populella</i>	a moth	
35.012	<i>Anacamptis blattariella</i>	a moth	
35.018	<i>Hypatima rhomboidella</i>	a moth	
35.028	<i>Brachmia blandella</i>	a moth	
35.031	<i>Helcystogramma rufescens</i>	a moth	
35.038	<i>Bryotropha domestica</i>	a moth	
35.04	<i>Bryotropha terrella</i>	a moth	



*Tachystola acroxantha*



*Carcina quercana*

Butterflies and Moths of the Sandwell Valley

35.047	<i>Bryotropha affinis</i>	a moth
35.058	<i>Metzneria metzneriella</i>	a moth
35.096	<b><i>Chionodes fumatella</i></b>	<b>a moth</b>
35.099	<b><i>Gelechia senticetella</i></b>	<b>a moth</b>
35.109	<i>Scrobipalpa acuminatella</i>	a moth
35.123	<i>Scrobipalpa costella</i>	a moth
35.143	<i>Teleiodes luculella</i>	a moth
35.147	<b><i>Carpatolechia decorella</i></b>	<b>a moth</b>
35.159	<i>Exoteleia dodecella</i>	a moth
35.16	<i>Stenolechia gemmella</i>	a moth



*Metzneria metzneriella*

**Batrachedridae**

36.001	<i>Batrachedra praeangusta</i>	a moth
--------	--------------------------------	--------

**Coleophoridae**

37.005	<i>Coleophora lutipennella</i>	a moth
37.015	<i>Coleophora serratella</i>	a moth
37.035	<i>Coleophora alcyonipennella</i>	Clover Case-bearer
37.048	<i>Coleophora mayrella</i>	a moth
37.052	<i>Coleophora ibipennella</i>	a moth
37.073	<i>Coleophora alticolella</i>	a moth
37.086	<i>Coleophora versurella</i>	a moth
37.095	<b><i>Coleophora trochilella</i></b>	<b>a moth</b>
37.102	<i>Coleophora argentula</i>	a moth

**Elachistidae**

38.004	<i>Apheloseitia argentella</i>	a moth
38.018	<i>Apheloseitia bisulcella</i>	a moth
38.029	<i>Elachista luticomella</i>	a moth
38.03	<i>Elachista albifrontella</i>	a moth
38.038	<i>Elachista rufocinerea</i>	a moth
38.039	<i>Elachista maculicerusella</i>	a moth



*Coleophora alticolella*  
Cases on *Juncus* sp

**Parametriotidae**

39.001	<i>Blastodacna hellerella</i>	a moth
39.002	<b><i>Blastodacna atra</i></b>	<b>Apple Pith Moth</b>

**Momphidae**

40.001	<i>Mompha conturbatella</i>	a moth
40.008	<i>Mompha subbistrigella</i>	a moth
40.009	<b><i>Mompha sturnipennella</i></b>	<b>a moth</b>
40.01	<i>Mompha epilobiella</i>	a moth
40.011	<i>Anybia langiella</i>	a moth
40.015	<i>Psacaphora raschkiella</i>	a moth

**Blastobasidae**

41.002	<i>Blastobasis adustella</i>	a moth
41.003	<i>Blastobasis lacticolella</i>	a moth

**Alucitidae**

44.001	<i>Alucita hexadactyla</i>	Many-plumed Moth
--------	----------------------------	------------------

**Pterophoridae**

45.004	<i>Platyptilia gonodactyla</i>	Triangle Plume
45.008	<i>Gillmeria pallidactyla</i>	Yarrow Plume

Butterflies and Moths of the Sandwell Valley

45.01	<i>Amblyptilia acanthodactyla</i>	Beautiful Plume
45.03	<i>Pterophorus pentadactyla</i>	White Plume
45.044	<i>Emmelina monodactyla</i>	Common Plume

**Schreckensteiniidae**

46.001	<i>Schreckensteinia festaliella</i>	a moth
--------	-------------------------------------	--------

**Epermeniidae**

47.001	<b><i>Phaulernis fulviguttella</i></b>	<b>a moth</b>
47.006	<i>Calotripis falciformis</i>	a moth

**Choreutidae**

48.001	<i>Anthophila fabriciana</i>	a moth
--------	------------------------------	--------

**Tortricidae**

49.004	<i>Ditula angustiorana</i>	Red-barred Tortrix
49.009	<i>Capua vulgana</i>	a moth
49.013	<i>Archips podana</i>	Large Fruit-tree Tortrix
49.014	<i>Archips crataegana</i>	Brown Oak Tortrix
49.015	<i>Archips xylosteana</i>	Variegated Golden Tortrix
49.022	<i>Ptycholoma lecheana</i>	a moth
49.023	<i>Pandemis cinnamomeana</i>	a moth
49.024	<i>Pandemis corylana</i>	Chequered Fruit-tree Tortrix
49.025	<i>Pandemis cerasana</i>	Barred Fruit-tree Tortrix
49.026	<i>Pandemis heparana</i>	Dark Fruit-tree Tortrix
49.028	<i>Syndemis musculana</i>	a moth
49.029	<i>Lozotaenia forsterana</i>	a moth
49.031	<i>Zelotherses paleana</i>	Timothy Tortrix
49.037	<i>Clepsia spectrana</i>	Cyclamen Tortrix
49.038	<i>Clepsia consimilana</i>	a moth
49.039	<i>Epiphyas postvittana</i>	Light Brown Apple Moth
49.04	<i>Lozotaeniodes formosana</i>	a moth
49.044	<i>Tortricodes alternella</i>	a moth
49.05	<i>Cnephasia stephensiana</i>	Grey Tortrix
49.059	<i>Tortrix viridana</i>	Green Oak Tortrix
49.06	<i>Aleimma loeflingiana</i>	a moth
49.061	<i>Acleris holmiana</i>	a moth
49.062	<i>Acleris forsskaleana</i>	a moth
49.065	<i>Acleris comariana</i>	Strawberry Tortrix
49.066	<i>Acleris laterana</i>	a moth
49.069	<i>Acleris sparsana</i>	a moth
49.07	<i>Acleris rhombana</i>	Rhomboid Tortrix
49.071	<i>Acleris emargana</i>	a moth
49.077	<i>Acleris variegana</i>	Garden Rose Tortrix
49.08	<i>Acleris hastiana</i>	a moth
49.083	<i>Acleris ferrugana</i>	a moth
49.084	<i>Acleris notana</i>	a moth
49.085	<i>Acleris kochiella</i>	a moth
49.087	<i>Acleris literana</i>	a moth
49.091	<i>Pseudargyrotoza conwagana</i>	a moth
49.095	<i>Phtheochroa rugosana</i>	a moth



Beautiful Plume



*Schreckensteinia festaliella*

## Butterflies and Moths of the Sandwell Valley

49.097	<i>Cochylimorpha straminea</i>	a moth
49.101	<i>Phalonidia manniana</i>	a moth
49.109	<i>Agapeta hamana</i>	a moth
49.11	<i>Agapeta zoegana</i>	a moth
49.12	<i>Aethes smeathmanniana</i>	a moth
49.127	<i>Aethes cnicana</i>	a moth
49.128	<i>Aethes rubigana</i>	a moth
49.133	<i>Cochylis nana</i>	a moth
49.134	<i>Cochylis roseana</i>	a moth
49.137	<i>Cochylis dubitana</i>	a moth
49.139	<i>Cochylischroa atricapitana</i>	a moth
49.144	<i>Eudemis profundana</i>	a moth
49.146	<b><i>Apotomis semifasciana</i></b>	<b>a moth</b>
49.149	<i>Apotomis turbidana</i>	a moth
49.15	<i>Apotomis betuletana</i>	a moth
49.151	<i>Apotomis capreana</i>	a moth
49.155	<i>Hedya salicella</i>	a moth
49.156	<i>Hedya nubiferana</i>	Marbled Orchard Tortrix
49.157	<i>Hedya pruniana</i>	Plum Tortrix
49.159	<i>Hedya atropunctana</i>	a moth
49.161	<i>Celypha striana</i>	a moth
49.166	<i>Celypha lacunana</i>	a moth
49.18	<i>Piniphila bifasciana</i>	a moth
49.183	<i>Lobesia abscisana</i>	a moth
49.186	<i>Endothenia gentianaeana</i>	a moth
49.188	<i>Endothenia marginana</i>	a moth
49.193	<i>Endothenia quadrimaculana</i>	a moth
49.194	<i>Bactra lancealana</i>	a moth
49.2	<i>Enarmonia formosana</i>	Cherry Bark Tortrix
49.214	<i>Ancylis badiana</i>	a moth
49.215	<i>Ancylis achatana</i>	a moth
49.216	<i>Ancylis mitterbacheriana</i>	a moth
49.223	<i>Rhopobota naevana</i>	Holly Tortrix
49.224	<i>Spilonota ocellana</i>	Bud Moth
49.231	<i>Epinotia brunnichana</i>	a moth
49.233	<i>Epinotia solandriana</i>	a moth
49.24	<i>Epinotia immundana</i>	a moth
49.244	<i>Epinotia subocellana</i>	a moth
49.248	<i>Epinotia tenerana</i>	Nut Bud Moth
49.249	<i>Epinotia ramella</i>	a moth
49.254	<i>Epinotia bilunana</i>	a moth
49.255	<i>Epinotia nisella</i>	a moth
49.26	<i>Zeiraphera isertana</i>	a moth
49.264	<i>Eucosma obumbratana</i>	a moth
49.265	<i>Eucosma cana</i>	a moth
49.266	<i>Eucosma hohenwartiana</i>	a moth
49.269	<i>Eucosma campoliliana</i>	a moth



*Aethes smeathmanniana*



*Eudemis profundana*

Butterflies and Moths of the Sandwell Valley

49.277	<b><i>Eucosma pupillana</i></b>	<b>a moth</b>
49.279	<i>Gypsonoma dealbana</i>	a moth
49.28	<b><i>Gypsonoma oppressana</i></b>	<b>a moth</b>
49.281	<i>Gypsonoma sociana</i>	a moth
49.284	<i>Epiblema sticticana</i>	a moth
49.288	<i>Epiblema foenella</i>	a moth
49.289	<i>Epiblema costipunctana</i>	a moth
49.292	<i>Notocelia cynosbatella</i>	a moth
49.294	<i>Notocelia uddmanniana</i>	Bramble Shoot Moth
49.295	<i>Notocelia roborana</i>	a moth
49.298	<i>Notocelia trimaculana</i>	a moth
49.304	<i>Clavigesta purdeyi</i>	Pine Leaf-mining Moth
49.306	<i>Rhyacionia pinicolana</i>	a moth
49.307	<i>Rhyacionia pinivorana</i>	Spotted Shoot Moth
49.309	<i>Dichrorampha plumbana</i>	a moth
49.315	<i>Dichrorampha simpliciana</i>	a moth
49.321	<i>Dichrorampha petiverella</i>	a moth
49.325	<i>Cydia ulicetana</i>	a moth
49.338	<i>Cydia pomonella</i>	Codling Moth
49.341	<i>Cydia splendana</i>	a moth
49.342	<i>Cydia fagiglandana</i>	a moth
49.345	<i>Lathronympha strigana</i>	a moth
49.347	<i>Grapholita compositella</i>	a moth
49.3541	<i>Grapholita molesta</i>	Oriental Fruit Moth
49.356	<b><i>Aspila lobarzewskii</i></b>	<b>a moth</b>
49.363	<i>Pammene argyrana</i>	a moth
49.365	<i>Pammene albuginana</i>	a moth
49.367	<i>Pammene fasciana</i>	a moth
49.371	<i>Pammene rhediella</i>	Fruitlet Mining Tortrix
49.375	<i>Pammene regiana</i>	a moth
49.376	<i>Pammene aurita</i>	a moth
49.379	<i>Pammene aurana</i>	a moth



*Notocelia uddmanniana*



*Aspila lobarzewskii*



Yellow -legged Clearwing

**Cossidae**

50.002	<i>Zeuzera pyrina</i>	Leopard Moth
--------	-----------------------	--------------

**Sesiidae**

52.003	<i>Sesia bembeciformis</i>	Lunar Hornet Moth
52.012	<i>Synanthedon vespiformis</i>	Yellow-legged Clearwing
52.013	<i>Synanthedon tipuliformis</i>	Currant Clearwing

**Zygaenidae**

52.007	<i>Zygaena sp.</i>	Burnet species
54.008	<i>Zygaena filipendulae</i>	Six-spot Burnet
54.009	<i>Zygaena lonicerae</i>	Narrow-bordered Five-spot Burnet

**Hesperiidae**

57.001	<i>Erynnis tages</i>	Dingy Skipper
57.005	<i>Thymelicus lineola</i>	Essex Skipper
57.006	<i>Thymelicus sylvestris</i>	Small Skipper
57.009	<i>Ochlodes sylvanus</i>	Large Skipper

Butterflies and Moths of the Sandwell Valley

<b>Pieridae</b>		
58.003	<i>Anthocharis cardamines</i>	Orange-tip
58.006	<i>Pieris brassicae</i>	Large White
58.007	<i>Pieris rapae</i>	Small White
58.008	<i>Pieris napi</i>	Green-veined White
58.01	<i>Colias croceus</i>	Clouded Yellow
58.013	<i>Gonepteryx rhamni</i>	Brimstone
<b>Nymphalidae</b>		
59.002	<i>Lasiommata megera</i>	Wall
59.003	<i>Pararge aegeria</i>	Speckled Wood
59.005	<i>Coenonympha pamphilus</i>	Small Heath
59.009	<i>Aphantopus hyperantus</i>	Ringlet
59.01	<i>Maniola jurtina</i>	Meadow Brown
59.011	<i>Pyronia tithonus</i>	Gatekeeper
59.012	<i>Melanargia galathea</i>	Marbled White
59.023	<i>Vanessa atalanta</i>	Red Admiral
59.024	<i>Vanessa cardui</i>	Painted Lady
59.026	<i>Aglais io</i>	Peacock
59.027	<i>Aglais urticae</i>	Small Tortoiseshell
59.031	<i>Polygonia c-album</i>	Comma
<b>Lycaenidae</b>		
61.001	<i>Lycaena phlaeas</i>	Small Copper
61.004	<i>Favonius quercus</i>	Purple Hairstreak
61.005	<i>Callophrys rubi</i>	Green Hairstreak
61.006	<i>Satyrrium w-album</i>	White-letter Hairstreak
61.012	<i>Celastrina argiolus</i>	Holly Blue
61.018	<i>Polyommatus icarus</i>	Common Blue
<b>Pyralidae</b>		
62.001	<i>Aphomia sociella</i>	Bee Moth
62.006	<i>Galleria mellonella</i>	Wax Moth
62.029	<i>Phycita roborella</i>	a moth
62.034	<i>Acrobasis repandana</i>	a moth
62.035	<i>Acrobasis advenella</i>	a moth
62.038	<i>Acrobasis consociella</i>	a moth
62.042	<i>Myelois circumvoluta</i>	Thistle Ermine
62.048	<i>Euzophera pinguis</i>	a moth
62.05	<b><i>Euzophera cinerosella</i></b>	<b>a moth</b>
62.054	<i>Homoeosoma sinuella</i>	a moth
62.058	<i>Phycitodes binaevella</i>	a moth
62.059	<i>Phycitodes saxicola</i>	a moth
62.062	<i>Plodia interpunctella</i>	Indian Meal Moth
62.072	<i>Pyralis farinalis</i>	Meal Moth
62.075	<i>Hypsopygia costalis</i>	Gold Triangle
62.076	<i>Hypsopygia glaucinalis</i>	a moth
62.077	<i>Endotricha flammealis</i>	a moth
<b>Crambidae</b>		
63.006	<i>Pyrausta aurata</i>	a moth



Wall



Painted Lady



*Acrobasis repandana*

Butterflies and Moths of the Sandwell Valley

63.014	<i>Sitochroa palealis</i>	a moth
63.018	<i>Anania coronata</i>	a moth
63.025	<i>Anania hortulata</i>	Small Magpie
63.028	<i>Ostrinia nubilalis</i>	European Corn-borer
63.033	<i>Udea lutealis</i>	a moth
63.034	<i>Udea prunalis</i>	a moth
63.038	<i>Pleuroptya ruralis</i>	Mother of Pearl
63.052	<i>Nomophila noctuella</i>	Rush Veneer
63.054	<i>Cydalima perspectalis</i>	Box-tree Moth
63.057	<i>Evergestis forficalis</i>	Garden Pebble
63.06	<i>Evergestis pallidata</i>	a moth
63.064	<i>Scoparia ambigualis</i>	a moth
63.066	<i>Scoparia pyralella</i>	a moth
63.067	<i>Eudonia lacustrata</i>	a moth
63.073	<i>Eudonia truncicolella</i>	a moth
63.074	<i>Eudonia mercurella</i>	a moth
63.075	<i>Eudonia pallida</i>	a moth
63.079	<i>Calamotropha paludella</i>	a moth
63.08	<i>Chrysoteuchia culmella</i>	Garden Grass-veneer
63.081	<i>Crambus pascuella</i>	a moth
63.086	<i>Crambus lathoniellus</i>	a moth
63.088	<i>Crambus perlella</i>	a moth
63.089	<i>Agriphila tristella</i>	a moth
63.09	<i>Agriphila inquinatella</i>	a moth
63.093	<i>Agriphila straminella</i>	a moth
63.095	<i>Agriphila geniculea</i>	a moth
63.099	<i>Catoptria pinella</i>	a moth
63.114	<i>Elophila nymphaeata</i>	Brown China-mark
63.115	<i>Acentria ephemerella</i>	Water Veneer
63.116	<i>Cataclysta lemnata</i>	Small China-mark



Box-tree Moth



Pebble Hook-tip

**Drepanidae**

65.001	<i>Falcaria lacertinaria</i>	Scalloped Hook-tip
65.002	<i>Watsonalla binaria</i>	Oak Hook-tip
65.005	<i>Drepana falcataria</i>	Pebble Hook-tip
65.007	<i>Cilix glaucata</i>	Chinese Character
65.008	<i>Thyatira batis</i>	Peach Blossom
65.009	<i>Habrosyne pyritoides</i>	Buff Arches
65.01	<i>Tethea ocularis</i>	Figure of Eighty
65.013	<i>Ochropacha duplaris</i>	Common Lutestring



Emperor Moth

**Lasiocampidae**

66.001	<i>Poecilocampa populi</i>	December Moth
66.01	<i>Euthrix potatoria</i>	Drinker

**Saturniidae**

68.001	<i>Saturnia pavonia</i>	Emperor Moth
--------	-------------------------	--------------

**Sphingidae**

69.001	<i>Mimas tiliae</i>	Lime Hawk-moth
69.002	<i>Smerinthus ocellata</i>	Eyed Hawk-moth

Butterflies and Moths of the Sandwell Valley

69.003	<i>Laothoe populi</i>	Poplar Hawk-moth
69.01	<i>Macroglossum stellatarum</i>	Humming-bird Hawk-moth
69.016	<i>Deilephila elpenor</i>	Elephant Hawk-moth
69.017	<i>Deilephila porcellus</i>	Small Elephant Hawk-moth

**Geometridae**

70.006	<i>Idaea fuscovenosa</i>	Dwarf Cream Wave
70.008	<i>Idaea seriata</i>	Small Dusty Wave
70.009	<i>Idaea subsericeata</i>	Satin Wave
70.011	<i>Idaea dimidiata</i>	Single-dotted Wave
70.013	<i>Idaea biselata</i>	Small Fan-footed Wave
70.016	<i>Idaea aversata</i>	Riband Wave
70.018	<i>Idaea straminata</i>	Plain Wave
70.027	<i>Calothyranis floslactata</i>	Cream Wave
70.029	<i>Timandra comae</i>	Blood-Vein
70.036	<i>Cyclophora punctaria</i>	Maiden's Blush
70.037	<i>Cyclophora linearia</i>	Clay Triple-lines
70.038	<i>Rhodometra sacraria</i>	Vestal
70.045	<i>Scotopteryx chenopodiata</i>	Shaded Broad-bar
70.049	<i>Xanthorhoe fluctuata</i>	Garden Carpet
70.051	<i>Xanthorhoe spadicearia</i>	Red Twin-spot Carpet
70.052	<i>Xanthorhoe ferrugata</i>	Dark-barred Twin-spot Carpet
70.053	<i>Xanthorhoe designata</i>	Flame Carpet
70.054	<i>Xanthorhoe montanata</i>	Silver-ground Carpet
70.059	<i>Camptogramma bilineata</i>	Yellow Shell
70.061	<i>Epirrhoe alternata</i>	Common Carpet
70.067	<i>Anticlea derivata</i>	Streamer
70.069	<i>Pelurga comitata</i>	Dark Spinach
70.074	<i>Hydriomena furcata</i>	July Highflyer
70.075	<i>Hydriomena impluviata</i>	May Highflyer
70.077	<i>Pennithera firmata</i>	Pine Carpet
70.079	<i>Thera britannica</i>	Spruce Carpet
70.081	<i>Thera obeliscata</i>	Grey Pine Carpet
70.084	<i>Plemyria rubiginata</i>	Blue-bordered Carpet
70.085	<i>Cidaria fulvata</i>	Barred Yellow
70.086	<i>Electrophaes corylata</i>	Broken-barred Carpet
70.087	<i>Cosmorhoe ocellata</i>	Purple Bar
70.089	<i>Eulithis prunata</i>	Phoenix
70.09	<i>Eulithis testata</i>	Chevron
70.092	<i>Eulithis mellinata</i>	Spinach
70.093	<i>Gandaritis pyraliata</i>	Barred Straw
70.094	<i>Ecliptopera silaceata</i>	Small Phoenix
70.095	<i>Chloroclysta siterata</i>	Red-Green Carpet
70.097	<i>Dysstroma truncata</i>	Common Marbled Carpet
70.098	<i>Dysstroma citrata</i>	Dark Marbled Carpet
70.1	<i>Colostygia pectinataria</i>	Green Carpet
70.106	<i>Operophtera brumata</i>	Winter Moth
70.107	<i>Epirrita dilutata</i>	November Moth



Maiden's Blush



Yellow Shell



Green Carpet

## Butterflies and Moths of the Sandwell Valley

70.112	<i>Euchoeca nebulata</i>	Dingy Shell
70.114	<i>Hydrelia flammeolaria</i>	Small Yellow Wave
70.113	<i>Odezia atrata</i>	Chimney Sweeper
70.131	<i>Mesotype didymata</i>	Twin-spot Carpet
70.132	<i>Perizoma affinitata</i>	Rivulet
70.133	<i>Perizoma alchemillata</i>	Small Rivulet
70.138	<i>Perizoma flavofasciata</i>	Sandy Carpet
70.141	<i>Gymnoscelis rufifasciata</i>	Double-striped Pug
70.142	<i>Chloroclystis v-ata</i>	V-Pug
70.144	<i>Pasiphila rectangulata</i>	Green Pug
70.147	<i>Eupithecia tenuiata</i>	Slender Pug
70.115	<i>Eupithecia linariata</i>	Toadflax Pug
70.151	<i>Eupithecia pulchellata</i>	Foxglove Pug
70.156	<i>Eupithecia abbreviata</i>	Brindled Pug
70.157	<i>Eupithecia dodoneata</i>	Oak-tree Pug
70.158	<i>Eupithecia pusillata</i>	Juniper Pug
70.116	<i>Eupithecia tripunctaria</i>	White-spotted Pug
70.161	<i>Eupithecia virgaureata</i>	Golden-rod Pug
70.168	<i>Eupithecia nanata</i>	Narrow-winged Pug
70.173	<i>Eupithecia centaureata</i>	Lime-speck Pug
70.175	<i>Eupithecia trisignaria</i>	Triple-spotted Pug
70.176	<i>Eupithecia intricata</i>	Freyer's Pug
70.179	<i>Eupithecia absinthiata</i>	Wormwood Pug
70.179	<i>Eupithecia absinthiata f. goossensata</i>	Ling Pug
70.182	<i>Eupithecia assimilata</i>	Currant Pug
70.183	<i>Eupithecia vulgata</i>	Common Pug
70.184	<i>Eupithecia exiguata</i>	Mottled Pug
70.187	<i>Eupithecia icterata</i>	Tawny Speckled Pug
70.188	<i>Eupithecia succenturiata</i>	Bordered Pug
70.119	<i>Eupithecia subfuscata</i>	Grey Pug
70.192	<i>Aplocera plagiata</i>	Treble-bar
70.195	<i>Chesias legatella</i>	Streak
70.198	<i>Lobophora halterata</i>	Seraphim
70.199	<i>Pterapherapteryx sexalata</i>	Small Seraphim
70.2	<i>Acasis viretata</i>	Yellow-barred Brindle
70.203	<i>Archiearis parthenias</i>	Orange Underwing
70.205	<i>Abraxas grossulariata</i>	Magpie Moth
70.206	<i>Calospilos sylvata</i>	Clouded Magpie
70.207	<i>Lomaspilis marginata</i>	Clouded Border
70.211	<i>Macaria notata</i>	Peacock Moth
70.214	<i>Macaria liturata</i>	Tawny-barred Angle
70.218	<i>Chiasmia clathrata</i>	Latticed Heath
70.222	<i>Petrophora chlorosata</i>	Brown Silver-line
70.224	<i>Plagodis dolabraria</i>	Scorched Wing
70.226	<i>Opisthograptis luteolata</i>	Brimstone Moth
70.233	<i>Ennomos quercinaria</i>	August Thorn
70.234	<i>Ennomosalniaria</i>	Canary-shouldered Thorn



Toadflax Pug



Yellow-barred Brindle



Peacock Moth

Butterflies and Moths of the Sandwell Valley

70.235	<i>Ennomos fuscantaria</i>	Dusky Thorn
70.236	<i>Ennomos erosaria</i>	September Thorn
70.237	<i>Selenia dentaria</i>	Early Thorn
70.239	<i>Selenia tetralunaria</i>	Purple Thorn
70.24	<i>Odontopera bidentata</i>	Scalloped Hazel
70.241	<i>Crocallis elinguaris</i>	Scalloped Oak
70.243	<i>Ourapteryx sambucaria</i>	Swallow-tailed Moth
70.244	<i>Colotois pennaria</i>	Feathered Thorn
70.245	<i>Alsophila aescularia</i>	March Moth
70.247	<i>Phigalia pilosaria</i>	Pale Brindled Beauty
70.248	<i>Lycia hirtaria</i>	Brindled Beauty
70.251	<i>Biston strataria</i>	Oak Beauty
70.252	<i>Biston betularia</i>	Peppered Moth
70.253	<i>Agriopis leucophaearia</i>	Spring Usher
70.254	<i>Agriopis aurantiaria</i>	Scarce Umber
70.255	<i>Agriopis marginaria</i>	Dotted Border
70.256	<i>Erannis defoliaria</i>	Mottled Umber
70.257	<i>Menophra abruptaria</i>	Waved Umber
70.258	<i>Peribatodes rhomboidaria</i>	Willow Beauty
70.264	<i>Deileptenia ribeata</i>	Satin Beauty
70.265	<i>Alcis repandata</i>	Mottled Beauty
70.27	<i>Ectropis crepuscularia</i>	Engrailed
70.274	<i>Aethalura punctulata</i>	Grey Birch
70.275	<i>Ematurga atomaria</i>	Common Heath
70.276	<i>Bupalus piniaria</i>	Bordered White
70.277	<i>Cabera pusaria</i>	Common White Wave
70.278	<i>Cabera exanthemata</i>	Common Wave
70.279	<i>Lomographa bimaculata</i>	White-pinion Spotted
70.28	<i>Lomographa temerata</i>	Clouded Silver
70.282	<i>Theria primaria</i>	Early Moth
70.283	<i>Campaea margaritaria</i>	Light Emerald
70.284	<i>Hylaea fasciaria</i>	Barred Red
70.297	<i>Pseudoterpna pruinata</i>	Grass Emerald
70.299	<i>Geometra papilionaria</i>	Large Emerald
70.3	<i>Comibaena bajularia</i>	Blotched Emerald
70.302	<i>Hemistola chrysoprasaria</i>	Small Emerald
70.305	<i>Hemithea aestivaria</i>	Common Emerald



Purple Thorn



Common White Wave



Sallow Kitten

**Notodontidae**

71.003	<i>Cerura vinula</i>	Puss Moth
71.005	<i>Furcula furcula</i>	Sallow Kitten
71.006	<i>Furcula bicuspis</i>	Alder Kitten
71.007	<i>Furcula bifida</i>	Poplar Kitten
71.011	<i>Drymonia ruficornis</i>	Lunar Marbled Brown
71.012	<i>Notodonta dromedarius</i>	Iron Prominent
71.013	<i>Notodonta ziczac</i>	Pebble Prominent
71.017	<i>Pheosia tremula</i>	Swallow Prominent
71.018	<i>Pheosia gnoma</i>	Lesser Swallow Prominent

Butterflies and Moths of the Sandwell Valley

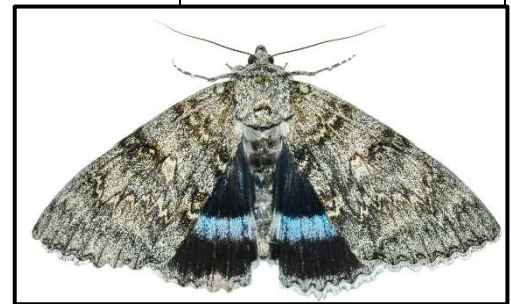
71.02	<i>Pterostoma palpina</i>	Pale Prominent
71.021	<i>Ptilodon capucina</i>	Coxcomb Prominent
71.025	<i>Phalera bucephala</i>	Buff-tip
71.027	<i>Clostera curtula</i>	Chocolate-tip

**Erebidae**

72.001	<i>Scoliopteryx libatrix</i>	Herald
72.002	<i>Rivula sericealis</i>	Straw Dot
72.003	<i>Hypena proboscidalis</i>	Snout
72.007	<i>Hypena crassalis</i>	Beautiful Snout
72.009	<i>Leucoma salicis</i>	White Satin
72.01	<i>Lymantria monacha</i>	Black Arches
72.013	<i>Euproctis similis</i>	Yellow-tail
72.015	<i>Calliteara pudibunda</i>	Pale Tussock
72.017	<i>Orgyia antiqua</i>	Vapourer
72.019	<i>Spilosoma lutea</i>	Buff Ermine
72.02	<i>Spilosoma lubricipeda</i>	White Ermine
72.022	<i>Diaphora mendica</i>	Muslin Moth
72.024	<i>Phragmatobia fuliginosa</i>	Ruby Tiger
72.026	<i>Arctia caja</i>	Garden Tiger
72.029	<i>Callimorpha dominula</i>	Scarlet Tiger
72.031	<i>Tyria jacobaeae</i>	Cinnabar
72.043	<i>Eilema depressa</i>	Buff Footman
72.044	<i>Eilema griseola</i>	Dingy Footman
72.045	<i>Eilema lurideola</i>	Common Footman
72.046	<i>Eilema complana</i>	Scarce Footman
72.049	<i>Eilema sororcula</i>	Orange Footman
72.053	<i>Herminia tarsipennalis</i>	Fan-foot
72.055	<i>Herminia grisealis</i>	Small Fan-foot
72.061	<i>Schrankia costaestrigalis</i>	Pinion-streaked Snout
72.063	<i>Lygephila pastinum</i>	Blackneck
72.069	<i>Laspeyria flexula</i>	Beautiful Hook-tip
72.076	<i>Catocala fraxini</i>	Clifden Nonpareil
72.078	<i>Catocala nupta</i>	Red Underwing
72.083	<i>Euclidia glyphica</i>	Burnet Companion
72.084	<i>Callistege mi</i>	Mother Shipton



Ruby Tiger



Clifden Nonpareil



Red Underwing

**Noctuidae**

73.001	<i>Abrostola tripartita</i>	Spectacle
73.002	<i>Abrostola triplasia</i>	Dark Spectacle
73.012	<i>Diachrysia chrysitis</i>	Burnished Brass
73.014	<i>Polychrysia moneta</i>	Golden Plusia
73.015	<i>Autographa gamma</i>	Silver Y
73.016	<i>Autographa pulchrina</i>	Beautiful Golden Y
73.017	<i>Autographa jota</i>	Plain Golden Y
73.022	<i>Plusia festucae</i>	Gold Spot
73.024	<i>Protodeltote pygarga</i>	Marbled White Spot
73.036	<i>Acronicta alni</i>	Alder Moth
73.037	<i>Acronicta tridens</i>	Dark Dagger

Butterflies and Moths of the Sandwell Valley

73.038	<i>Acronicta psi</i>	Grey Dagger
73.039	<i>Acronicta aceris</i>	Sycamore
73.04	<i>Acronicta leporina</i>	Miller
73.045	<i>Viminia rumicis</i>	Knot Grass
73.046	<i>Subacronicta megacephala</i>	Poplar Grey
73.047	<i>Craniophora ligustri</i>	Coronet
73.05	<i>Cucullia absinthii</i>	Wormwood
73.052	<i>Cucullia umbratica</i>	Shark
73.053	<i>Cucullia chamomillae</i>	Chamomile Shark
73.058	<i>Cucullia verbasci</i>	Mullein
73.062	<i>Amphipyra pyramidea</i>	Copper Underwing
73.062/3	<i>Amphipyra pyramidea/berbera</i>	Copper/Svensson's C. Underwing
73.063	<i>Amphipyra berbera</i>	Svensson's Copper Underwing
73.064	<i>Amphipyra tragopoginis</i>	Mouse Moth
73.068	<i>Allophyes oxyacanthae</i>	Green-brindled Crescent
73.069	<i>Xylocampa areola</i>	Early Grey
73.082	<i>Cryphia (Euthales) algae</i>	Tree-lichen Beauty
73.084	<i>Bryophila domestica</i>	Marbled Beauty
73.092	<i>Caradrina morpheus</i>	Mottled Rustic
73.095	<i>Caradrina clavipalpis</i>	Pale Mottled Willow
73.096	<i>Hoplodrina octogenaria</i>	Uncertain
73.097	<i>Hoplodrina blanda</i>	Rustic
73.099	<i>Hoplodrina ambigua</i>	Vine's Rustic
73.102	<i>Rusina ferruginea</i>	Brown Rustic
73.105	<i>Dypterygia scabriuscula</i>	Bird's Wing
73.107	<i>Mormo maura</i>	Old Lady
73.109	<i>Thalpophila matura</i>	Straw Underwing
73.113	<i>Phlogophora meticulosa</i>	Angle Shades
73.114	<i>Euplexia lucipara</i>	Small Angle Shades
73.119	<i>Helotropha leucostigma leucostigma</i>	Crescent
73.12	<i>Eremobia ochroleuca</i>	Dusky Sallow
73.121	<i>Gortyna flavago</i>	Frosted Orange
73.123	<i>Hydraecia micacea</i>	Rosy Rustic
73.127	<i>Amphipoea lucens</i>	Large Ear
73.131	<i>Luperina testacea</i>	Flounced Rustic
73.136	<i>Nonagria typhae</i>	Bulrush Wainscot
73.142	<i>Coenobia rufa</i>	Small Rufous
73.144	<i>Denticucullus pygmina</i>	Small Wainscot
73.147	<i>Photedes minima</i>	Small Dotted Buff
73.154	<i>Apamea remissa</i>	Dusky Brocade
73.156	<i>Apamea crenata</i>	Clouded-bordered Brindle
73.158	<i>Apamea sordens</i>	Rustic Shoulder-knot
73.159	<i>Apamea unanimitis</i>	Small Clouded Brindle
73.16	<i>Apamea scolopacina</i>	Slender Brindle
73.162	<i>Apamea monoglypha</i>	Dark Arches
73.163	<i>Apamea lithoxylaea</i>	Light Arches
73.168	<i>Lateroligia ophiogramma</i>	Double Lobed



Beautiful Golden Y



Bird's Wing



Angle Shades

## Butterflies and Moths of the Sandwell Valley

73.169	<i>Mesapamea secalis</i>	Common Rustic
73.169/70	<i>Mesapamea secalis</i> agg.	Common/Lesser Cm Rustic agg.
73.17	<i>Mesapamea didyma</i>	Lesser Common Rustic
73.171	<i>Litoligia literosa</i>	Rosy Minor
73.172	<i>Mesoligia furuncula</i>	Cloaked Minor
73.173	<i>Oligia strigilis</i>	Marbled Minor
73.173/4/5	<i>Oligia strigilis</i> agg.	Marbled Minor agg.
73.174	<i>Oligia latruncula</i>	Tawny Marbled Minor
73.175	<i>Oligia versicolor</i>	Rufous Minor
73.176	<i>Oligia fasciuncula</i>	Middle-barred Minor
73.179	<i>Tiliacea citrigo</i>	Orange Sallow
73.18	<i>Tiliacea aurago</i>	Barred Sallow
73.181	<i>Xanthia togata</i>	Pink-barred Sallow
73.182	<i>Cirrhia icteritia</i>	Sallow
73.183	<i>Cirrhia gilvago</i>	Dusky-lemon Sallow
73.186	<i>Agrochola lychnidis</i>	Beaded Chestnut
73.187	<i>Anchoscelis litura</i>	Brown-spot Pinion
73.188	<i>Anchoscelis helvola</i>	Flounced Chestnut
73.189	<i>Leptologia lota</i>	Red-line Quaker
73.19	<i>Leptologia macilenta</i>	Yellow-line Quaker
73.192	<i>Sunira circellaris</i>	Brick
73.193	<i>Omphaloscelis lunosa</i>	Lunar Underwing
73.194	<i>Conistra vaccinii</i>	Chestnut
73.206	<i>Prolitha leautieri</i>	Blair's Shoulder-knot
73.21	<i>Eupsilia transversa</i>	Satellite
73.213	<i>Ipimorpha subtusa</i>	Olive
73.214	<i>Cosmia diffinis</i>	White-spotted Pinion
73.216	<i>Calminia trapezina</i>	Dun-bar
73.217	<i>Nemus pyralina</i>	Lunar-spotted Pinion
73.219	<i>Atethmia centrigo</i>	Centre-barred Sallow
73.22	<i>Brachylomia viminalis</i>	Minor Shoulder-knot
73.221	<i>Parastichtis suspecta</i>	Suspected
73.222	<i>Apterogenum ypsilon</i>	Dingy Shears
73.224	<i>Griposia aprilina</i>	Merveille du Jour
73.225	<i>Dryobotodes eremita</i>	Brindled Green
73.228	<i>Antitype chi</i>	Grey Chi
73.231	<b><i>Aporophyla lueneburgensis</i></b>	Deep-brown dart
73.233	<i>Pylopora nigra</i>	Black Rustic
73.238	<i>Mniotype adusta</i>	Dark Brocade
73.241	<i>Panolis flammea</i>	Pine Beauty
73.242	<i>Orthosia incerta</i>	Clouded Drab
73.244	<i>Orthosia cerasi</i>	Common Quaker
73.245	<i>Orthosia cruda</i>	Small Quaker
73.247	<i>Orthosia gracilis</i>	Powdered Quaker
73.249	<i>Orthosia gothica</i>	Hebrew Character
73.25	<i>Anorthoa munda</i>	Twin-spotted Quaker
73.254	<i>Cerapteryx graminis</i>	Antler Moth



Yellow-line Quaker



Centre-barred Sallow



Merveille du Jour

Butterflies and Moths of the Sandwell Valley

73.255	<i>Anarta trifolii</i>	Nutmeg
73.261	<i>Polia nebulosa</i>	Grey Arches
73.264	<i>Lacanobia thalassina</i>	Pale-shouldered Brocade
73.266	<i>Lacanobia suasa</i>	Dog's Tooth
73.267	<i>Lacanobia oleracea</i>	Bright-line Brown-eye
73.27	<i>Melanchra persicariae</i>	Dot Moth
73.271	<i>Ceramica pisi</i>	Broom Moth
73.273	<i>Hada nana</i>	Shears
73.274	<i>Mamestra brassicae</i>	Cabbage Moth
73.276	<i>Sideridis rivularis</i>	Campion
73.279	<i>Hecatera bicolorata</i>	Broad-barred White
73.281	<i>Hadena bicruris</i>	Lychnis
73.282	<i>Hadena compta</i>	Varied Coronet
73.286	<i>Hadena perplexa perplexa</i>	Tawny Shears
73.29	<i>Mythimna conigera</i>	Brown-line Bright-eye
73.291	<i>Mythimna pallens</i>	Common Wainscot
73.293	<i>Mythimna impura</i>	Smoky Wainscot
73.295	<i>Mythimna vitellina</i>	Delicate
73.298	<i>Mythimna ferrago</i>	Clay
73.301	<i>Leucania comma</i>	Shoulder-striped Wainscot
73.302	<i>Leucania obsoleta</i>	Obscure Wainscot
73.307	<i>Peridroma saucia</i>	Pearly Underwing
73.314	<b><i>Euxoa nigricans</i></b>	<b>Garden Dart</b>
73.317	<i>Agrotis exclamationis</i>	Heart and Dart
73.319	<i>Agrotis segetum</i>	Turnip Moth
73.325	<i>Agrotis puta</i>	Shuttle-shaped Dart
73.327	<i>Agrotis ipsilon</i>	Dark Sword-grass
73.328	<i>Axylia putris</i>	Flame
73.329	<i>Ochropleura plecta</i>	Flame Shoulder
73.331	<i>Diarsia dahlii</i>	Barred Chestnut
73.333	<i>Diarsia mendica</i>	Ingrailed Clay
73.334	<i>Diarsia rubi</i>	Small Square-spot
73.338	<b><i>Lycophotia porphyrea</i></b>	<b>True Lover's Knot</b>
73.339	<i>Rhyacia simulans</i>	Dotted Rustic
73.342	<i>Noctua pronuba</i>	Large Yellow Underwing
73.343	<i>Noctua fimbriata</i>	Broad-b Yellow Underwing
73.345	<i>Noctua comes</i>	Lesser Yellow Underwing
73.346	<i>Noctua interjecta</i>	Least Yellow Underwing
73.348	<i>Noctua janthe</i>	Lesser Br-b Yellow Underwing
73.351	<i>Graphiphora augur</i>	Double Dart
73.352	<i>Anaplectoides prasina</i>	Green Arches
73.353	<i>Xestia baja</i>	Dotted Clay
73.357	<i>Xestia xanthographa</i>	Square-spot Rustic
73.358	<i>Xestia sexstrigata</i>	Six-striped Rustic
73.359	<i>Xestia c-nigrum</i>	Setaceous Hebrew Character
73.361	<i>Xestia triangulum</i>	Double Square-spot
73.365	<i>Eugnorisma glareosa</i>	Autumnal Rustic



Campion




Shuttle-shaped Dart



Least Black Arches

Butterflies and Moths of the Sandwell Valley

73.368	<i>Naenia typica</i>	Gothic	
<b>Nolidae</b>			
74.003	<i>Nola cucullatella</i>	Short-cloaked Moth	
74.004	<i>Nola confusalis</i>	Least Black Arches	
74.007	<i>Bena bicolorana</i>	Scarce Silver-lines	
74.008	<i>Pseudoips prasinana</i>	Green Silver-lines	
74.009	<i>Nycteola revayana</i>	Oak Nycteoline	Scarce Silver-lines



*'Red Admirals' by Terry Parker*

The late Terry Parker was one of the finest illustrators of birds. Examples of his work can be seen in many publications of the West Midlands Bird Club and in the Sandnats Bulletins. Whilst his output mainly focussed on British birds, he was also known for sublime work featuring insects.